



cachemire®

COLLECTION **DESIGN** DE MATHYS



# SABLE

SAND EFFECT • TRADITIONAL EFFECTS FOR A MODERN INTERIOR

**APPLICATION INSTRUCTIONS** PRIMER - BASE - FINISH





# SABLE PRIMER

The colour of the cachemire SABLE Primer is white; it strengthens the surface and reduces the suction for an even end-result.

Coverage: 8m<sup>2</sup>/L

Drying time: 1.5 hours at 20°C/60°r.h.



**1**

TAPING UP BEFORE APPLYING  
THE SABLE PRIMER



**3**

APPLY SABLE PRIMER WITH ROLLER



**2**

APPLY SABLE PRIMER



# SABLE BASE

## Cloud effect

A new velvet matt interior wall paint with a fine sand structure.

Prolonged open time (2-3 hours) - no tendency to show overlaps - good covering power - odourless - closed paint film - homogenous repartition of the sand in the paint without tendency to settle in the can.

Coverage: 8m<sup>2</sup>/kg

Drying time: 4 hours at 20°C/60°r.h.



**4**

APPLY PAINT WITH A SPATULA  
WHEREAFTER YOU CAN PARTITION  
THE PAINT WITH A SPALTER



**5**

APPLY THE PAINT CROSSWISE



# SABLE BASE

Cloud effect

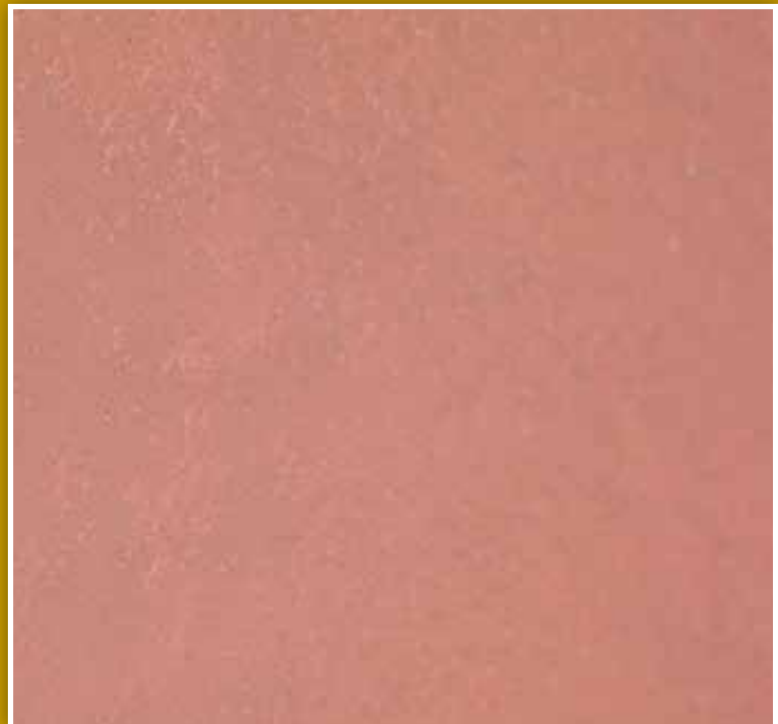


**6**

WORK FROM THE UPPER RIGHT CORNER DIAGONALLY TO THE INNER LEFT CORNER



**7**  
THEN YOU CAN GENTLY CARESS THE SAND TO MAKE THE EFFECT EVEN SMOOTHER. IF NECESSARY, APPLY AN EXTRA LAYER AS FINISHING.





# SABLE BASE

Vertical technique



8

A VARIATION OF APPLYING THE CACHEMIRE SABLE: APPLY IN A VERTICAL PATTERN



9

THEREAFTER CARESS VERTICALLY TO OBTAIN A SLEEK LOOK



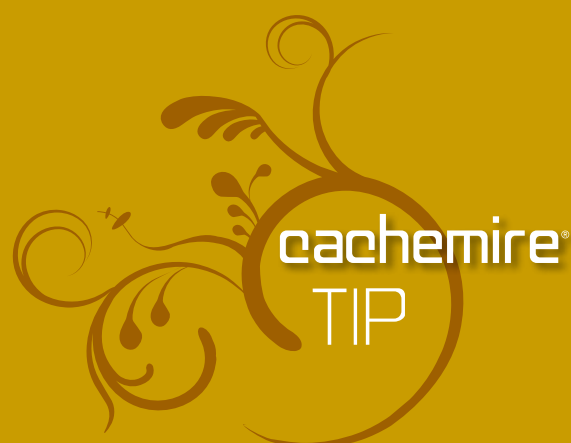
# SABLE FINISH

Cachemire SABLE Finish is a transparent varnish that gives extra protection to the decorative sand structure. It will become washable, scratch-proof and hard-wearing.

Coverage: 12-14m<sup>2</sup>/L

Drying time: 30 min. at 20°C/60°r.h.

Apply with a spalter or roller.



Be inspired by cachemire SABLE, a new velvet matt interior wall paint with fine sand structure, suitable for all spaces in any living style. With cachemire SABLE you create a decorative sand effect that gives all your walls a warm, traditional yet contemporary feel.

Cachemire SABLE creates soft gradations in colour and the relief of nature. Cachemire SABLE masks slight unevennesses by covering with a finely textured layer with depth and a tactile aspect. The natural, earthy look also evokes the organic tints of stone and sand.